

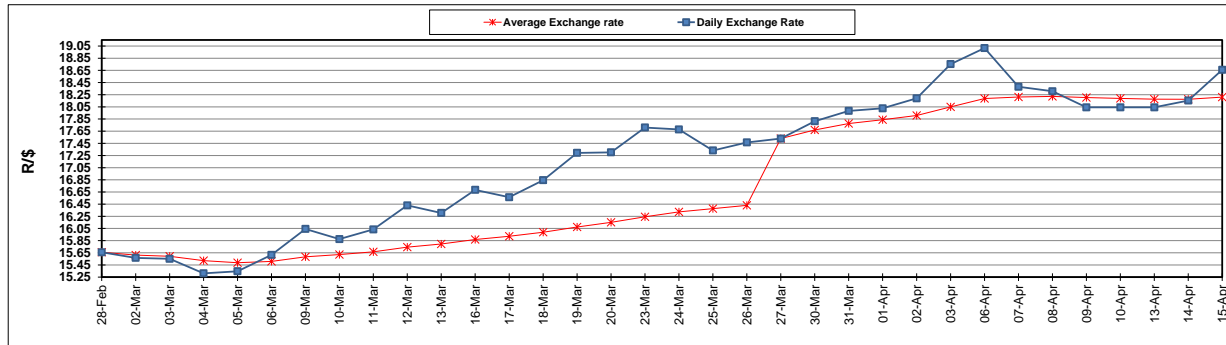
	PETROL 95 ULP	PETROL 93 ULP & LRP	DIESEL 0.05%	DIESEL 0.005%	ILL. PAR.
GAUTENG PUMP PRICE (SA c/l) AS FROM 01/04/2020	1,396.000	1,376.000	-	-	-
WHOLESALE PRICE (SA c/l) AS FROM 01/04/2020	-	-	1,269.560	1,273.960	672.828
SINGLE NATIONAL MAXIMUM RETAIL PRICE	-	-	-	-	840.000
BASIC FUEL PRICE - 15/04/2020 (SA c/l)	316.162	306.660	374.665	390.621	287.950
PRESS RELEASE CONTRIBUTION TO BFP 01/04/2020 - 15/04/2020 (SA c/l)	448.770	438.770	518.630	523.030	468.128
UNIT OVER/(UNDER) RECOVERY - 15/04/2020 (SA c/l)	132.608	132.110	143.965	132.409	180.178
AVERAGE BASIC FUEL PRICE 27/03/2020 - 15/04/2020	310.487	305.510	434.672	443.697	322.451
AVERAGE UNIT OVER/(UNDER) RECOVERY 27/03/2020 - 15/04/2020	185.255	177.660	119.315	114.904	188.105

ANALYSIS MOVEMENT OF AVERAGE OVER/(UNDER) RECOVERY

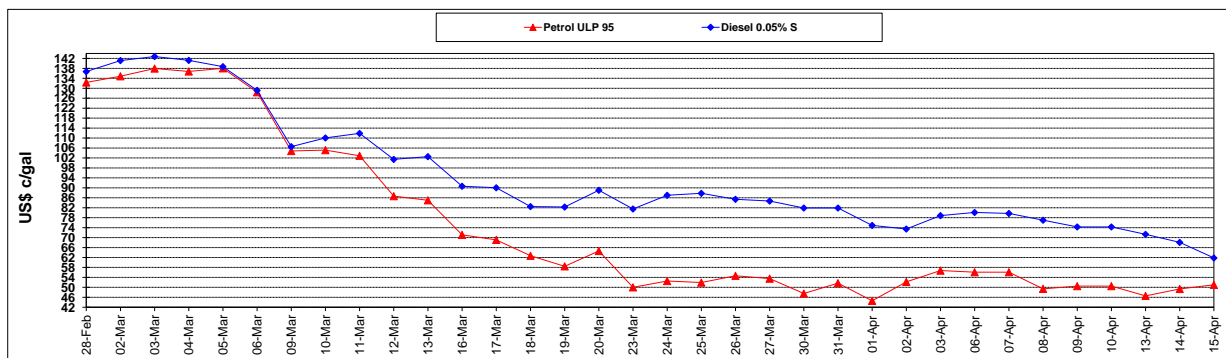
	PETROL 95	PETROL 93	DIESEL 0.05%	DIESEL 0.005%	ILL. PAR.
- MOVEMENT IN INTERNATIONAL PRODUCT PRICES	215.592	207.512	161.787	158.258	219.613
- MOVEMENT IN EXCHANGE RATE	(30.338)	(29.852)	(42.472)	(43.354)	(31.507)
AVERAGE UNIT OVER/(UNDER) RECOVERY 27/03/2020 - 15/04/2020	185.255	177.660	119.315	114.904	188.105

R/\$ EXCHANGE RATE - (R/\$18.6587 - 15/04/2020)

EXCHANGE RATE USED IN BASIC FUEL PRICE



INTERNATIONAL PRODUCT PRICES OF BASKET USED IN BASIC FUEL PRICE



BASIC FUEL PRICE IN SA CENTS PER LITRE

